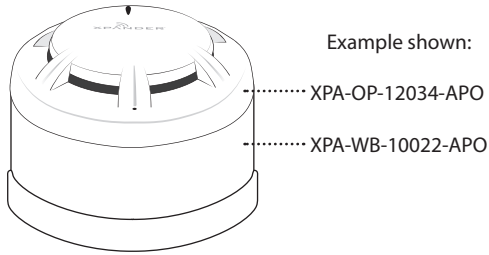


Wireless Detector Installation Guide



Example shown:

..... XPA-OP-12034-APO

..... XPA-WB-10022-APO

Part number Description

XPA-WB-10022-APO	XPander Address Module	[3]
XPA-OH-13032-APO	XPander Multisensor Detector (Optical/Heat)	[4]
XPA-HT-11170-APO	XPander Heat Detector (A1R)	[1]
XPA-HT-11171-APO	XPander Heat Detector (CS)	[1]
XPA-OP-12034-APO	XPander Optical Smoke Detector	[2]

See the Specification section for compliance information.

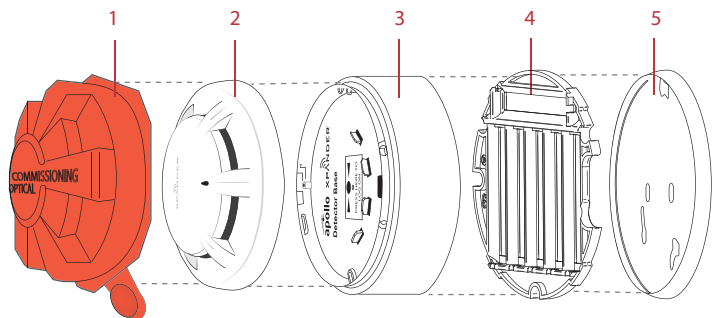
1 Pre installation



Installation must conform to applicable local installation codes and should only be installed by a fully trained competent person.

- Ensure that the device is installed as per the site survey.
- The use of a non-metallic spacer should be considered if mounting the device on to a metal surface.
- Do NOT Press the Log On button on a pre-programmed device, as this will cause communication with the Control Panel to be lost. Should this happen, delete the device from the system and add it back on.
- This device contains electronics that may be susceptible to damage from Electrostatic Discharge (ESD). Take appropriate precautions when handling electronic boards.

2 Components

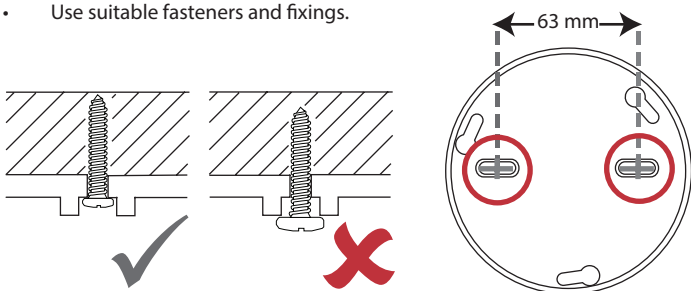


1 Dust cover, 2 Detector, 3 Wireless Module, 4 Battery retaining plate, 5 Mounting plate

3 Fix mounting plate

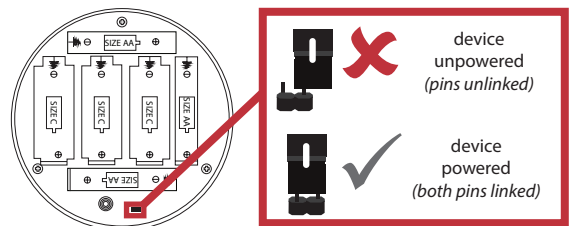
Remove the mounting plate by turning the device ANTICLOCKWISE, to release it from the mounting plate.

- Use both fixing positions to ensure a firm fixing.
- Use suitable fasteners and fixings.



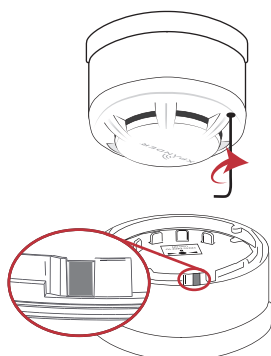
4 Power device

- When fitting / replacing batteries; observe correct polarity, using only specified batteries.
- Connect the power jumper across the PIN header.



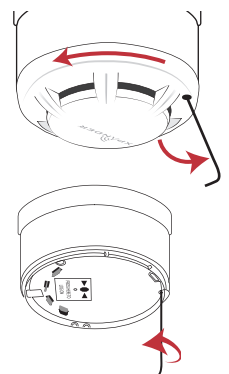
5 Optional device locking

- To lock the wireless module into the mounting plate, insert a 1.5 mm allen key into the allen key slot and turn clockwise as shown.
- The detector can also be locked into the wireless module. To do so, prior to refitting the detector, remove the cut out (shaded) section as shown.



6 Device unlocking

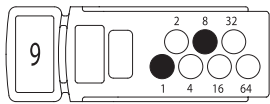
- To unlock the detector from the wireless module, insert a 1.5mm allen key and lever the allen key towards the outside of the device whilst turning the detector anticlockwise to release as shown.
- To unlock the wireless module from the mounting plate, insert a 1.5 mm allen key and turn anticlockwise to release as shown.



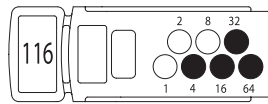
7 Address setting

To set an address using the XPERT 7 card, remove the pips using a screwdriver. The pips are designated with numbers. Each removed pip is added together to provide the final address.

Addressing examples



$$1 + 8 = 9$$



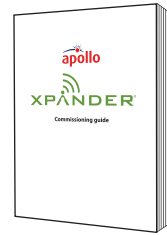
$$4 + 16 + 32 + 64 = 116$$

To save you doing the maths, you can use the easy online tool. Visit <https://www.apollo-fire.co.uk/training-support/tools/xpert-card-addressing/> or scan the QR code.



8 Configuration

- Refer to the XPander Commissioning Guide (PP2286) for programming details.



Free to download from www.apollo-fire.co.uk

- Reassemble the device, once configured.

IMPORTANT

- Remove dust cover before use.
- The device should be tested upon installation and in accordance with local requirements.
- Testing should only be carried out by a fully trained competent person.

- The manufacturer recommends regular functional testing of at least once per annum or in accordance with local codes of practice.
- Cleaning and repairs must be undertaken by the manufacturers authorised representative.
- Do not open the case to clean inside the detector.

Specification

Operating temperature	-10 to +55 °C
Storage temperature	5 to 30 °C
Humidity	0 to 95% non-condensing
Supply	6x AA alkaline (Panasonic LR6AD Powerline / Varta 4006 Industrial)

CAUTION!
Fitting of an incorrect battery type invalidates the product certification and may result in poor performance.

IP rating	IP23
Operating frequency	868 MHz
Output transmitter power	Auto adjusting 0 to 14 dBm (0 to 25 mW)
Signalling protocol	X
Dimensions (Ø x D)	113 x 40 mm (without detector) 113 x 76 mm (with smoke detector) 113 x 81 mm (with heat detector) 113 x 87 mm (with multisensor detector)
Weight	0.40 kg (with detector)
Location	Type A: For indoor use

Regulatory information

Manufacturing location Carrier Manufacturing Poland Sp. z o.o.
Ul. Kolejowa 24. 39-100 Ropczyce, Poland

Placed on the market by Apollo Fire Detectors Limited

Year of manufacture See devices serial number label

Certification



For detailed information, see the product Declaration of Performance (available at www.apollo-fire.co.uk).

Approved to

See part listing for associated products:
EN54-5:2001. Incorporating Amendment No. 1. Fire detection and fire alarm systems. Part 5: Heat detectors - Point Detectors. [1]

EN54-7:2001. Incorporating Amendment No. 1. Fire detection and fire alarm systems. Part 7: Smoke detectors - Point detectors using scattered light, transmitted light or ionization. [2][4]

EN54-25:2008. Incorporating corrigenda September 2010 and March 2012. Fire detection and fire alarm systems. Part 25: Components using radio links. [3]

European Union Directives

Apollo declares that this device is in compliance with Directive 2014/53/EU. The full text of the EU declaration of conformity is available at the following internet address: www.apollo-fire.co.uk

2012/19/EU (WEEE directive): Products marked with this symbol cannot be disposed of as unsorted municipal waste in the European Union. For proper recycling, return this product to your local supplier upon purchase of equivalent new equipment, or dispose of it at designated collection points. For more information see www.recyclethis.info

Dispose of your batteries in an environmentally friendly manner according to your local regulations.

